



**MLPB**  
ADVANCING HEALTH  
THROUGH JUSTICE

October 2022

## GETTING THE WORD OUT



### Legal Problem-Solving: It Matters for *Whole Person, Whole Family* Health!

MLPB recently concluded an 18-month planning process convened in partnership with [First 5 Orange County](#), the [Rhode Island Department of Health Office of Family Visiting, Smart from the Start](#), and [The JPB Foundation](#). Are you a system-builder invested in exploring new strategies that can accelerate families' access to resources and legal protections? *If so:*

---

[Watch](#) the Handbook Release event!



Thank you to our event panelists:

Dounia Belmir, *Parent Leader*

[Smart from the Start](#)

Charlyn Harper Browne, *Senior Fellow*

[Center for the Study of Social Policy](#)

Lori-Anne Dufresne, *Program Specialist*

[Smart from the Start](#)

Ana Page, *Consultant*

[First 5 Orange County](#)

Sara Remington, Program Manager

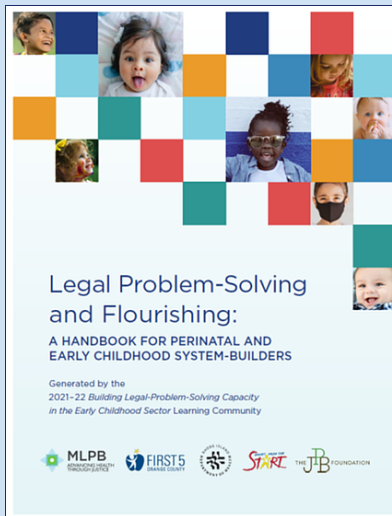
[Office of Family Visiting, RIDOH](#)

Laura Sternberger, Director, Pregnant and Postpartum Women's Programs

Director, MA Moms Do Care Project

[Institute for Health & Recovery](#)

[Download](#) the Handbook!



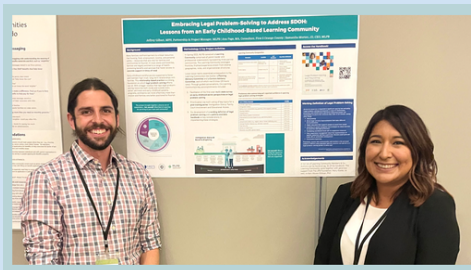
---

[Read](#) the blog post!

BRIDGING  
DIVIDES

---

Check out the [poster](#) presented at [The Root Cause Coalition National Summit!](#)



Earlier this month, [First 5 Orange County](#) consultant **Ana Page** (above, right) and MLPB Partnership & Project Manager **Jeff Gilbert** (above, left) represented the *Building Legal Problem-Solving Capacity in the Early Childhood Sector Learning Community* at this event in Minneapolis, MN. You can find the poster — **Embracing Legal Problem-Solving to Address SDOH: Lessons from an Early Childhood-based Learning Community** — [here](#).

*Upstreaming* integrated, among other things, MLPB's [team-facing legal partnering](#) **support for the interdisciplinary care team** as well as an innovative **flexible fund**. This fund was a kind of **cash transfer policy** that enabled more than 75% of enrolled families to access resources (like rental assistance, cribs, and breast pumps) that they otherwise could not afford. This new article describes the pilot, related learning, and how *Upstreaming's* flexible fund innovation aligns with a range of cash transfer policies gaining momentum across the country.

## And ICYMI:

## Legal partnering in an Emergency Medicine context

[High Touch, High Trust: Using Community Health Advocates And Lawyers To Address ED High Utilizers](#) (Am. J. Emerg. Med., Aug. 1, 2022) *Subscription required*

## More evidence of DULCE impact!

[Benefits Of A Universal Intervention In Pediatric Medical Homes To Identify And Address Health-Related Social Needs: An Observational Cohort Study](#) (*Acad. Pediatr.*, Jul. 18, 2022) *Subscription required*

## Cancer health disparities and legal partnering

[Patient navigation to address sociolegal barriers for patients with cancer: A comparative-effectiveness study \(Cancer, Jul. 1, 2022\)](#)

Legal partnering as part of a Family Medicine residency program

[From HRSA Grant To A Medical Practice: Improving Care For Children And Adolescents In A Family Residency Clinic](#) (R.I. Med. J., May 2022)

## CONNECT WITH US

### Let's talk!

MLPB will present on recent innovation and learning at these upcoming events. Stop by and tell us what's on your mind!



Nov. 2-3, 2022 | Framingham, MA & virtual  
**Legal Education & Rights Education: A  
Pioneering Element of Family Support**



Nov. 6-9, 2022 | Boston, MA  
**Building Legal Problem-Solving Capacity  
in the Early Childhood Sector**

[Learn more](#)

[Learn more](#)

## ON OUR MIND

October is [National Disability Employment Awareness Month \(NDEAM\)](#)!

**Top Stories:** [Disability & Health Equity](#)

- [These Doctors Admit They Don't Want Patients With Disabilities](#) (*The New York Times*, Oct. 19, 2022)
- [Some Doctors Are Reluctant To Care For Patients With Disabilities, Study Finds](#) (*The Boston Globe*, Oct. 6, 2022)
- [Advancing Health Equity And Reducing Health Disparities For People With Disabilities In The United States](#) (*Health Affairs*, Oct. 2022)
- [Have Almost Fifty Years Of Disability Civil Rights Laws Achieved Equitable Care?](#) (*Health Affairs*, Oct. 2022)
- ['I Am Not The Doctor For You': Physicians' Attitudes About Caring For People With Disabilities](#) (*Health Affairs*, Oct. 2022)
- [Identifying And Exploring Bias In Public Opinion On Scarce Resource Allocation During The COVID-19 Pandemic](#) (*Health Affairs*, Oct. 2022)

#### **Education & Health**

- [With Boston Special Education Students Missing Classes Because Of Late Buses, Two Advocacy Organizations Seek State Intervention](#) (*The Boston Globe*, Oct. 18, 2022)

#### **Employment & Health**

- [A Foundation For Health And Well-Being: Meaningful Employment](#) (*Health Affairs*, Oct. 2022)

#### **Environmental Justice & Health**

- [These Communities Want To Lower Residents' Electric Bills – And Carbon Emissions. Here's What's Stopping Them](#) (*The Boston Globe*, Oct. 16, 2022)

#### **Food Security & Health**

- [Association Of The Expiration Of Child Tax Credit Advance Payments With Food Insufficiency In US Households](#) (*JAMA Network Open*, Oct. 21, 2022)

#### **Gun Safety & Health**

- [Seizing A Critical Opportunity To Reduce Gun Violence: The Bipartisan Safer Communities Act](#) (*Health Affairs*, Oct. 7, 2022)

#### **Health Inequities and Care Transformation**

- [1.3 Million Americans Ration Insulin Because Of The Cost, Study Says](#) (*The Boston Globe*, Oct. 17, 2022)
- [Medical Care Alone Won't Halt The Spread Of Diabetes, Scientists Say](#) (*The New York Times*, Oct. 5, 2022)
- [Expanding Moral Injury: Why Resilience Training Won't Fix It](#) (*JAMA*, Sep. 27, 2022)

#### **Housing & Health**

- [Late Baby Boomers Have Long Been Vulnerable To Homelessness. Now As They Age, Housing Providers Are Struggling To Keep Up With Their Needs.](#) (*The Boston Globe*, Oct. 22, 2022)
- [Defunct Hotels Offer New Real Estate For Housing Homeless People](#) (*The Boston Globe*, Oct. 5, 2022)

### **Immigration & Health**

- ['The System Is Strained': Greater Boston's Support Networks Struggle To Keep Up As Thousands Of Migrants Surge Into The Area](#) (*The Boston Globe*, Oct. 13, 2022)

Care planning, delivery and financing should systematically account for people's legal rights, risks and remedies. MLPB equips communities of care with legal education and problem-solving insight that fosters prevention, health equity and human-centered system change. Through training, consultation and technical assistance, we help teams and organizations better connect people to the resources and legal protections they seek.

At a household level, this capacity-building support disrupts the trajectory of a social, economic or environmental need into a legal — and health — crisis. At a population level, this work cultivates communities of care as partners in system and policy change.

MLPB is a fiscally sponsored organization of [TSNE](#).

Information contained in this newsletter is for educational purposes only and does not constitute legal advice or establish an attorney-client relationship.

---

Connect with us



Mailing Address: MLPB c/o TSNE, 89 South Street, Suite 700, Boston, MA 02111

[Unsubscribe](#) [Manage preferences](#)